

INDEPENDENCE PARK COMMUNITY

VOICE



COMMUNITY

Farmers Market Opens June 9

The annual Independence Park Farmers Market officially kicks off summer in the area. The first market will be held on June 9 and will run for 10 Sundays through October. It is held on the second and fourth Sundays of each month.

Many of your favorite vendors will return again this year as will some exciting new vendors. Shoppers will be able to choose from a seasonal blend of fruits, vegetables and baked

goods.

Each market gives the neighborhood a chance to meet other neighbors and celebrate our neighborhood.

Each market will feature activities for adults and children. And our favorite musicians, the Indy Park Jammers will return to play bluegrass music.

A full schedule of events will be posted on our Facebook page.

Neighborhood support of the market is crucial for its continued success. We hope you'll join us on June 9 for the start of another great year. We can't wait to see the neighborhood gather together!

2019 INDEPENDENCE PARK FARMERS MARKET

SUNDAYS 9AM-1PM

JUNE 9 & 23

JULY 14 & 28

AUG 11 & 25

SEPT 8 & 22

OCT 13 & 27

SPONSORED BY



www.gipna.org



FOOD AND FUN

15th Annual Gourmet Pancake Breakfast on June 16

Now's your chance to treat Dad to all he can eat at the 15th Annual GIPNA Gourmet Pancake Breakfast! Join us at 9 a.m. on Sunday, June 16, at the Independence Park Bungalow for the recipes of our new pancake chef, Dennis Puhr, and to sit down with neighbors and friends for great food, great fun, and a great sense of

community.

As in year's past, our menu will consist of two very special pancakes, one egg dish, and a special children's table. This year's menu:

- **Lemon Pancake:** a delicious buttermilk pancake drizzled with lemon curd and blueberries and topped off with a kiss of powdered sugar.
- **Bread Pudding Pancake:** Our vanilla buttermilk pancake is topped with cinnamon-sugar butter and vanilla sauce.

- **For the Kids—Crazy Crunch Pancake:** a crunchy, cereal-filled cake topped with a variety of sugary cereals like Fruit Loops, Captain Crunch, etc., custard and whipped cream
- **An Eggstraordinary Dish!** A ham, cheese, and scallion frittata like you've never had before!
- **Sausages! Sausages!** Sausages! Gluten-free pancakes will be available! Fruit juice and Stivers coffee will be served and is included in the price.

The Gourmet Pancake Breakfast

will be held from 9 a.m. to noon in the bungalow, at the corner of Hamlin and Byron. Indoor and outdoor (weather permitting) seating is available. The price remains the same at \$10 for adults, \$7 for seniors, and \$5 for children 12 and under. Raffle tickets sold separately. Don't forget this is a fundraiser, so please bring money for the raffle!

Tickets will be sold on our website, at the GIPNA Farmers Market, or at the door on June 16.

GIPNA Board Meeting, May 7, Independence Park Bungalow, 7 p.m.

COMMUNITY EVENTS



MAY

SAT., MAY 4—Annual Alley Cleanup, 9 a.m. to noon. Meet at Byron and Lawndale.

SAT., MAY 4—Pre-Mother's Day Fine Craft Fair, noon to 4 p.m., Independence Park gymnasium.

SAT., MAY 4—Party for the Park, 5 to 9 p.m., Heineken Pub97; facebook.com/athleticfield.

TUES., MAY 7—GIPNA Board Meeting, 7 p.m., Independence Park Bungalow.

WED., MAY 8—CAPS Beat 1732 Meeting, 7 p.m., Athletic Field Park.

MON., MAY 13—Athletic Field Advisory Council Meeting, 6:30 p.m., Athletic Field Park ; facebook.com/athleticfield.

WED., MAY 15—Senior Meeting, 11 a.m., 17th District Police Station, 4650 N. Pulaski.

TUES., MAY 21—Independence Park Advisory Council, 7 p.m., Independence Park Fieldhouse, facebook.com/ipacchicago.

JUNE

SAT., JUNE 1—Free Shredding, 8:30 to 10:30 a.m., Wintrust Bank, 6336 N. Milwaukee Ave., and 11 a.m. to 1 p.m. at Wintrust Bank, 4343 W. Peterson Ave.

SUN., JUNE 2—Portage Park Farmers Market, 10 a.m. to 2 p.m., Irving Park Road at Long.

TUES., JUNE 4—GIPNA Board Meeting, 7 p.m., Independence Park Bungalow.

SUN., JUNE 9—Independence Park Farmers Market, 9 a.m. to 1 p.m. And our favorite musicians, the Indy Park Jammers will return to play bluegrass music.

MON., JUNE 10 Athletic Field Advisory Council Meeting, 6:30 p.m., Athletic Field Park; facebook.com/athleticfield.

WED., JUNE 12—CAPS Beat 1732 Meeting, 7 p.m., Athletic Field Park.

SUN., JUNE 16—15th Annual Gourmet Pancake Breakfast, 9 a.m. to noon, Independence Park Bungalow.

SUN., JUNE 16—Portage Park Farmers Market, 10 a.m. to 2 p.m., Irving Park Road at Long.

TUES., JUNE 18—Independence Park Advisory Council, 7 p.m., Independence Park Fieldhouse, facebook.com/ipacchicago.

WED., JUNE 19—Senior Meeting, 11 a.m., 17th District Police Station, 4650 N. Pulaski.

WED., JUNE 19—Pickin' Up the Parkways, 6 to 7 p.m., Athletic Field Park; facebook.com/athleticfield.

THURS., JUNE 20—Movin' to the Music, 5:30 to 6:30 p.m., Athletic Field Park Playground; facebook.com/athleticfield.

FRI., JUNE 21—AFAC Summer Kick-Off BBQ, 5:30 to 7:30 p.m., Athletic Field Park Basketball Court; facebook.com/athleticfield.

SAT., JUNE 22 Annual Block Sale in area around Athletic Field Park, 8 to 4 p.m.

SAT., JUNE 22—Free Shredding, 8:30 to 10:30 a.m., Wintrust Bank, 1946 W. Irving Park Rd., and 11 a.m. to 1 p.m. at Wintrust Bank, 4343 N. Elston.

SUN., JUNE 23—Independence Park Farmers Market, 9 a.m. to 1 p.m. Meet Your Neighbors Picnic at the market from 11 a.m. to 1 p.m.

FRI., JUNE 28—AFAC Movies in the Park, *Moonstruck*, dusk, Athletic Field Park Baseball Fields; facebook.com/athleticfield.

SAT., JUNE 29—Free Shredding, 8:30 to 10:30 a.m., Wintrust Bank, 100 W. North Ave., and 11 a.m. to 1 p.m. at Wintrust Bank, 2814 W. Fullerton Ave.

SUN., JUNE 30—Portage Park Farmers Market, 10 a.m. to 2 p.m., Irving Park Road at Long.

JULY

TUES, JULY 2—The regular GIPNA Board Meeting WILL NOT BE HELD in July.

CHARITABLE EFFORTS

Food Pantry's Neighborhood Walk on May 18

The Irving Park Community Food Pantry is organizing its second annual walk through the Old Irving Park neighborhood, in the vicinity of the Pantry. The goal of the walk is to generate both funds for the Pantry and awareness of its efforts in the community.

The walk will take place at 9 a.m. on Saturday, May 18. Participants can begin to assemble at 8:30. A route of about 1.7 miles through the neighborhood has been mapped out and approved by the city. The route should take about

30 to 40 minutes to complete.

The Pantry hopes to raise awareness about food insecurity in its area, which includes the 60641 and western half of 60618 ZIP codes. No donation is needed to walk, but walkers are encouraged to ask their friends for pledges. The funds raised will ensure the Pantry can provide its clients three days' worth of emergency food from all food groups on an ongoing basis.

School and church groups are encouraged to walk together. Students can earn two hours of service time for participating. For more information, contact Pantry executive director John Psiharis at info@irvingparkfoodpantry.org, or check for more details on the Pantry's Facebook page.

INDEPENDENCE PARK COMMUNITY VOICE

The *Independence Park Community Voice* is published by the Greater Independence Park Neighborhood Association (GIPNA), a 501(C)3 corporation.

This newsletter is for the Independence Park community. Please consider renewing your membership or joining GIPNA now. We need your support. Thank you.

Editorial: Jim O'Connor, Greg Shea
Photography: April Bayne, Robin Hochstatter,
Design/Production: Cindy Schuch

For submissions for the July/August 2019 issue:

Editorial Deadline:
June 15, 2019

Advertising Deadline:
June 10, 2019

The editorial board reserves the right to edit all submissions. Errors in advertisements are the sole responsibility of the advertiser.

E-MAIL: GIPNMAIL@GMAIL.COM

MAIL: GIPNA, P.O. BOX 18184
CHICAGO IL 60618

WEBSITE: WWW.GIPNA.ORG

The Greater Independence Park Neighborhood Association (GIPNA) is dedicated to maintaining and enhancing the quality of life in the Independence Park community by involving, informing, and encouraging people to participate in matters relating to the community, and by protecting the historical, social, cultural, and architectural character of the neighborhood.

This all-volunteer publication is made possible by the creative voices of our community and the generous support of area advertisers.

Join GIPNA on Facebook

Check out the GIPNA Facebook page for news, alerts, and conversation with your neighbors. Post your own comments to get the word out on your activities and announcements.

To find the page and like it, search for GIPNA: Greater Independence Park Neighborhood Association.

GIPNA BOARD OF DIRECTORS

Dickie Nichols, President
Kevin Haight, Vice-President
Alison Benjamin, Treasurer
Sharon Sears, Secretary

Board of Directors

Bobbie Bolociuch
Pat Clark
Scott Dewey
Wes Matucha
Lara Lerner
Greg Shea
Anne Watkins

Directors-at-Large

Jodie Bargeron
Chris Geymer
Robin Hochstatter
John Kuczura
Dan Lurie

Honorary Director-at-Large:

John Fusco

GIPNA BLOCK REPRESENTATIVES

3800 Avers - Candace Wayne & John Jemilo
3600 Byron - Jackie Ropski
3700 Byron - Larry Gates
3800 Byron - Suzanne Edwards
3900 Byron - Roseann Seablom
3600 Central Park - Sharon Gilbert
3700 Central Park - Bob Brutvan
3800, 3900 Central Park - Vania Bandelli
3900 Dakin - Joel Contreras
3600 Grace - Alison Benjamin
3700, 3800 Hamlin - Sharon Nichols
3900 Hamlin - Linda Lehman
3700 Irving Park Road - John Kuczura
3800 Irving Park Road - Linda Lehman
3700 Lawndale - Dorene Jordan
3800 Lawndale - Pat Matthews
3900 Lawndale - Cy Clausen
3600, 3700 Monticello - Pat Clark
3800 Monticello - Barbara Shaw
3900 Monticello - Cindy Schuch
3700 Ridgeway - Gerri Reardon
3800 Ridgeway - Karen Fontanetta
3900 Ridgeway - John & Sang Kuczura
3800 Springfield - Roseann Seablom

COMMUNICATION

E-Blasts to GIPNA Members

All GIPNA members who have access to email should be receiving e-blasts each Thursday. The emails are compiled by GIPNA and feature such news as announcements of events in the community, crime reports, and notices of meetings.

If you're a member in good standing and are not receiving the blasts, send an email to us at gipn@mail@gmail.com. We'll sign you up so that you don't miss any more neighborhood announcements.



FAREWELL

Goodbye from the Editor

Neighbors and friends,

This is a note to let everyone know this is my last issue of *The Voice*. After 20-odd years of producing newsletters, I'm stepping down.

When we first started GIPNA in 1996, I had no idea it would still be going (with a brief hiatus) 23 years later. It's been a lot of fun, and I'm proud of the work I've done to contribute to Independence Park's strong identity and sense of community. We have one of the best neighborhoods in Chicago—close-knit, friendly, and involved—because we've worked to make it that way.

I thank all the GIPNA board members I've worked with over the years. I thank the presidents who gave me their trust over the years. I thank the designers—Jim Grigar, David Dumo, Heather Aitken, and the wonderful Cindy Schuch—who have been my partners in putting *The Voice* together. And I thank Greg Shea, to whom I've passed the baton.

Most of all, I thank Pat Clark, who has been a true partner since the beginning. Pat interviews, writes, proofreads, sells ads, makes deliveries, and basically is indispensable in every way. I couldn't have done it without her. Thanks, Pat!

So, thanks for a lot of great memories. I'll see everyone at the Pancake Breakfast!

—Jim O'Connor

APPRECIATION

Volunteer Party Salutes Neighborhood Heroes

The B-Side hosted GIPNA's 2019 Volunteer Party on March 10. Ted Theo, wife Sophia, and dad Bob from the Alps put out a terrific spread of Greek specialties for GIPNA's guests to enjoy. It was especially good to see everyone since it's been such a hard winter.

GIPNA president Dickie Nichols recognized the volunteers for all their hard work, which contributes to making our neighborhood civic such a vital organization. In particular, Dickie recognized the block reps, who delivered the newsletters to their neighbors this winter when no human should have been outside.

She also thanked the many volunteers who pitch in to make the Farmers Market, Wine and Cheese

Party, Fine Craft Fair, and Gourmet Pancake Breakfast fun—and enable GIPNA to donate money to local schools and organizations. In 2018 GIPNA gave \$350 each to IPAC, the Irving Park Food Pantry, Carlson Community Services, and Lydia Home. We gave \$120 to Openlands, \$500 to Friends of Murphy, and \$8,000 to Murphy School. (The funds donated to Murphy were generated by the Wine and Cheese Party.) In addition, \$800 in holiday gift cards were given to Murphy and Disney families.

GIPNA vice president John Kuczura was honored as the Volunteer of the Year. John does it all. He sets up and takes down all the Farmers Market equipment, he flips pancakes at the Gourmet Pancake Breakfast, and he cheerfully does any job he's asked to do. (You really should see him in a sandwich board.) John is a priceless member of the board and of the neighborhood—thanks, John!





Are you a GIPNA member?

Join today!



Use PayPal at www.gipna.org

or mail in the form below with a check.

For information, send an e-mail to: membership@gipna.org

PLEASE PRINT: DATE

NAME #1

NAME #2

ADDRESS

Check here if new member, new to the neighborhood.

PHONE #1

PHONE #2

E-MAIL #1

E-MAIL #2

#GIPNA# MEMBERSHIP FORM

(Must be 18 yrs old) Fill in this form, and send with check, payable to GIPNA, to: GIPNA P. O. Box 18184 Chicago, IL 60618

Check amount enclosed:

Single \$10 Family \$20

Business \$15

Lifetime \$100 per person

Check here if a new member

Annual Dues enclosed: \$

Tax Deductible Donation for GIPNA: \$

Total of enclosed check: \$

Check if you would like to volunteer for events.

(GIPNA is an all-volunteer association.)

FUNDRAISING

A Banner Purchase for the Loncar Family

Anne Loncar won the bidding war for a GIPNA street banner at the November Wine & Cheese Party.

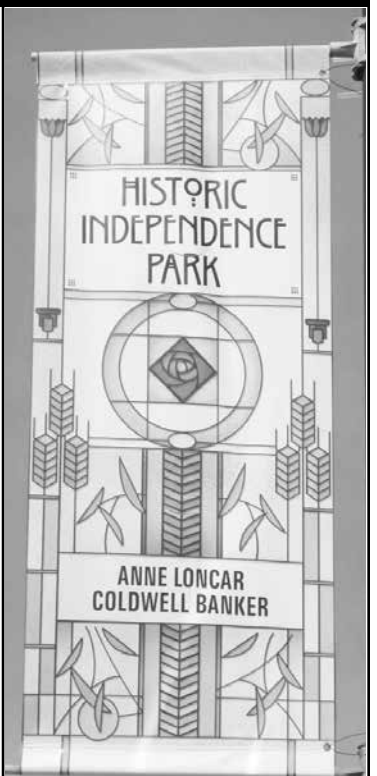
My family and I live in Independence Park. We have two kids, ages 5 and 12, and they both attend Murphy School. I am very involved at the school and currently serve as president of the Friends of Murphy.

I have enjoyed a successful career as a Realtor with Coldwell Banker Residential Brokerage for 17 years. I work with buyers and sellers throughout the city.

To me, being a real estate professional is more than buying and selling homes. It's about people and families making a good investment and finding a place to call home! As a native Chicagoan who loves her city, I've had the pleasure of helping many buyers discover which neighborhood is right for them, as well as working with sellers through what can often times be a stressful situation, while doing my best to make it a smooth transition.

I am a proud Certified Military and Corporate Relocation Specialist and a International Diamond Society recipient, which is awarded to the top 11% of Sales Associates worldwide in the Coldwell Banker system.

—Anne Loncar



#GIPNA#

Join today!

Use PayPal at www.gipna.org or mail in a check.

For information, send an e-mail to: gipnamail@gmail.com



GREEN KNOWLEDGE

Problem Paper and Blue Cart Recycling

The following information was picked up from Recycle by City/Chicago.

Why aren't paper coffee cups recyclable, if paper cartons are?

Since both cartons and paper cups are made of paper with a plastic coating, it's logical to think they should both be recyclable. Let's break down why that's not the case.

Cartons are recyclable in Chicago because there are paper manufacturers who want the strong, white fibers that are sandwiched in between the plastic layers. Those high-quality fibers are used to make new recycled paper products and building materials.

Cartons have become widely recycled only in the past few years. Thanks to processing advancements and industry collaboration through The Carton Council, more than 60% of the country now recycles cartons.

In Chicago, all cartons—including broth, soup, and juice cartons—are recyclable in the Blue Cart. However, to recycle them properly, (1) put the caps back on. On their own, plastic caps won't get recycled because they're too small to get properly sorted. And (2) don't flatten the cartons. Flat cartons can be misidentified by the sorting machines as paper, and wind up at the wrong place.

Paper coffee cups, on the other hand, are generally coated only on the inside of the cup. Any ink placed on the outside of the cup, like logos and customer names, soak into the fibers. That means cups need to be sorted out and treated with an additional process to remove the ink from the fibers. That extra step, called de-inking, takes extra processing, energy, water, and expense.

A few municipalities are making a go at recycling coffee cups, most recently New York, Seattle, and Washington, D.C. If they're successful in collecting clean cups and processing them efficiently, others may follow.

Recycling aside, using your own cup instead of a paper cup provides the biggest environmental benefit. No additional resources are needed, and bonus: Most coffee shops, including Starbucks, offer a discount for bringing your own mug. Small change. Big impact.

Can you recycle shredded paper?

As paperless billing and banking gain popularity, hopefully, we'll have less paper to shred. The truth is, shredding paper is great for security but not so good for recyclability. Shredded paper is not accepted in Chicago's recycling program, but it can be recycled at citywide shredding events.

Paper, junk mail, magazines, and catalogs are accepted for recycling, so it might seem odd that shredded paper is not. It's just paper, right? What makes shredded paper more difficult to recycle?

One factor is its size and shape. Once those small bits of paper mix with the other recyclables in the truck, they're nearly impossible to collect. Instead, shredded paper



clings to the other items, flitters around the recycling facility, and/or sticks to the equipment's gears.

At one point, bagged shredded paper could be placed in the recycling cart. However, that ended with the 'Go Bagless' initiative. "No bagged recyclables" means bagged shredded paper had to go too.

Another factor is limited recyclability. Like aluminum, steel, and glass, paper can't be recycled infinitely. The longer and stronger a paper product's fibers are, the more times it can be recycled. Shredding the paper cuts its fibers and reduces its recyclability. For instance, a new sheet of office paper can generally be recycled 5 to 7 times. But if that same paper is shredded, its lifecycle is dramatically shortened.

Don't give up, though. Shredded paper can be recycled when it's collected separately from other recyclables. That's where Chicago's Community Shred Events come in.

Hosted by the city, aldermen, and civic groups from March through November, these shredding events are an easy way to recycle your shreds for free. Free shredding of confidential documents (up to 2 bankers boxes full) is also provided onsite. [See the article on Wintrust Bank's Shred

Days on page 9.]

Shredding services at the events are provided care of Midway Moving Co. If you see them re-shredding your shreds, don't be alarmed. Re-shredding creates uniform-size shreds, which paper recyclers prefer. Shredded paper is commonly recycled into tissues, tissue paper and packaging including egg cartons and paper berry baskets.

These shredding events are provided for confidential documents only. Colored paper, newspaper, and general junk mail are not accepted.

There are other ways to keep shredded paper out of the landfill:

- Compost your shreds. Shredded paper can be used like leaves to provide carbon to your compost bin (especially useful in the winter when leaves are scarce). Shredded documents are considered safe for composting, as most inks are soy-based these days. Avoid adding colored paper and glossy paper to your compost bin to be safe.
- Get crafty. Shredded paper can be used to make gift-worthy seed bombs (a party favor favorite).

Bringing the Beauty of Outdoors Inside

Nature's Trace Co. is the passion of Rachel Sloan, a small-batch cold-process soap maker using natural, locally sourced ingredients from her garden and beehives in Independence Park. We asked Rachel to tell us about how she became a soap maker. Read on to learn more about your Talented Neighbors!

I am the daughter of a beekeeper, and I know how important honeybees are to our ecosystem. When my husband and I bought our first house in Independence Park, setting up a backyard apiary was always a distant dream. It became a reality when our neighbor said she was interested in keeping hives but the timing wasn't right for her family. So I said, "Well, I can get supplies from my dad!" And five years later we have four hives, two in our backyard, and two at the Keeler Gardens Pollinator Habitat in Old Irving Park.

After our hives were established, I began thinking about the possibility of blending my honey, beeswax, and the blossoms from my garden. What if I used these natural ingredients to make soap?

I have always enjoyed hand-made soap, seeking them out at farmers markets and boutique shops. The idea of using simple, earth-friendly, locally sourced ingredients appealed to me. My grandmother also made soap over an open fire when she was a girl. All of these things kindled my

desire to know more!

With my newfound interest, I began to research the science of soap making, digging into ingredients, methods, essential oils, and triglycerides. After I made my first batch of soap I couldn't stop! In making something that is both practical and beautiful, I found my passion. My soap business, Nature's Trace Co. was born.

My ultimate goal with Nature's Trace is to bring the beauty of outside inside for everyday use.

Raw honey gives soap a wonderful lather and the slightest lingering honey scent. Beeswax produces a nice, hard, long-lasting bar. Marigold petals harvested and dried from my garden offer a bright pop of color to the soap tops. I am constantly experimenting with roots, flower petals, tree bark, and teas to come up with fun new varieties, all inspired by and derived from natural ingredients.

As I have learned what it takes to build a small business, I also have grown to appreciate all of our neighborhood small businesses and what they bring to our community. It is a ton of work but also so much fun! I was able to participate as a vendor at last summer's Independence Park Farmers Market and plan to be there again this summer! I so appreciate all the love and support I have received from the community in my tiny venture.



CELEBRATION

How and When to Fly the Flag

May and June bring us Memorial Day (May 27) and Flag Day (June 14), two of the major occasions for flying the U.S. flag. As you

celebrate our national history, please take care to do so with the proper respect. Here are ten guidelines for flying the flag of the United States:

1. The flag should be hoisted briskly and lowered ceremoniously.

2. The flag is never allowed to touch the ground.

3. When hung over a sidewalk on a rope extending from a building to a pole, the union stars are always away from the building.

4. When vertically hung over the center of the street, the flag always has the union stars to the north in an east/west street, and to the east in a north/south street.

5. The flag of the United States of America should be at the center and at the highest point of the group when a number of flags of states or localities or penants of societies are grouped

and displayed from staffs.

6. The flag should never be festooned, drawn back, nor up in folds, but always be allowed to fall free.

7. The flag should be displayed at half-staff until noon on Memorial Day, then raised to the top of the staff.

8. Never fly the flag upside-down except as a signal of distress in instances of extreme danger to life or property.

9. The flag is never flown in inclement weather except when using an all-weather flag.

10. The flag can be flown every day from sunrise to sunset and at night if illuminated properly.

WINTRUST®

SECURITY

Wintrust Bank to Hold Shred Days for Documents

You can't keep all documents that contain sensitive information—we'd all have to live in warehouses! However, you can burn out a dozen shredders before you destroy all the material that piles up.

Wintrust Bank has announced a number of Shred Days that could help. You can bring your personal and/or sensitive documents to the designated sites and shred them for free. The resulting paper waste will be collected and recycled.

There is a limit of three paper bags or three small boxes of material per person. No plastic bags or electronic devices will be accepted. Note: Wintrust assumes no liability for the shredded material.

Items that can be shredded include tax information and returns, investment records and statements, bank statements, cancelled checks, paycheck stubs, ATM and credit card receipts, credit card statements, insurance and utility bills, other household financial information, personal documents, and pictures.

The schedule:

- **June 1**, 8:30 to 10:30 a.m., Wintrust Bank-Gladstone Park, 6336 N. Milwaukee Ave.
- **June 1**, 11 a.m. to 1 p.m., Wintrust Bank-Sauganash, 4343 W. Peterson Ave.
- **June 22**, 8:30 to 10:30 a.m., Wintrust Bank-North Center, 1946 W. Irving Park Rd.
- **June 22**, 11 a.m. to 1 p.m., Wintrust Bank-Mayfair, 4343 N. Elston Ave.
- **June 29**, 8:30 to 10:30 a.m., Wintrust Bank-Old Town, 100 W. North Ave.
- **June 29**, 11 a.m. to 1 p.m., Wintrust Bank-Logan Square, 2814 W. Fullerton Ave.
- **July 13**, 9 a.m. to noon, Wintrust Bank-Pilsen, 1800 S. Blue Island Ave.
- **July 27**, 8:30 to 10:30 a.m., Wintrust Bank-Near West, 2 N. Western Ave.
- **August 24**, 8:30 to 10:30 a.m., Wintrust Bank-Norridge, 4369 N. Harlem Ave., Norridge.

Ross Printing has moved to 3942 W. IRVING PARK ROAD

Here are some products we offer:

Banners • Black & White Copying • Booklets • Brochures • Business Cards
 Business Forms • Carbonless Forms • Catalogs • Color Copies • Coupons
 Door Hangers • Envelopes • Flyers • Invitations • Invoices • Labels
 Letterheads • Menus • Newsletters • Post Cards • Posters • Presentation Folders
 Wide Format Printing & More!!!

Ross Printing
 3942 W. IRVING PARK ROAD
 773-267-4212
 rossprinting@gmail.com

Jorge Rodriguez

773-491-5379

JORGE'S LANDSCAPING

Lawn Maintenance Specialists

Lawn Maintenance • Tree Removal
 New Sodding • Hedge Trimming



We maintain the three GIPNA Gardens
 Monticello and Waveland, Avers Parkway, Hamlin and Grace

NATURE'S TRACE CO.

SMALL BATCH SOAP

SAVE 10% OFF
 YOUR NEXT ORDER!

Visit naturestraceco.com and
 use promo code **GIPNA**





ALTERNATIVE
Home Improvement

Since 2003

Contact Sam Alt @ (773) 972-9459

**Deck Cleaning - Staining - Sealing
Wrought Iron Painting**

Deck Cleaning &
Pressure Washing of:

- * Decks & Porches
- * Fences & Pergolas
- * Vinyl Siding
- * Composite (Trex) Decking
- * Outdoor Patios & Beer Gardens



Residential
Commercial
Condominiums
Associations

*Celebrating 16 Years in Business and winner of the
2013, 2014, 2015 & 2016 Angie's List "Super Service Award"*

"Sam Alt, an Independence Park resident for over 40 years"

www.alternativehomeimprovement.com

Visit us on Facebook to see our work!



TAYLORMADE
LANDSCAPE DESIGN, INC.

INFO@TAYLORMLD.COM ■ 773.255.2789
WWW.TAYLORMLD.COM

MAUREEN TAYLOR
Longtime Old Irving Park Resident!



Create
YOU
@ Disney II

A place to learn, discover, and do.

Disney II Magnet High School
will be accepting 10th & 11th grade transfer students
for the 2019-20 school year.

Transfer student applications open May 1, 2019.

Interested parents/guardians should email:
jcardenas28@cps.edu or call (773) 534-5010 with any questions.

Please apply!

Students in grades K-9 can apply to the Disney II lottery via GoCPS.
The application for 2020-2021 will open in the **Fall of 2019.**

Disney II accepts students from all Chicago neighborhoods.

Come to Disney II to Create YOU!

DISNEY II MAGNET ELEMENTARY
3815 North Kedvale Avenue, Chicago, IL 60641
P 773 543 3750 • F 773 534 3757

DISNEY II MAGNET HIGH SCHOOL
3900 N. Lawndale Ave, Chicago, IL 60618
P 773 543 5010 • F 773 534 5199

For tour information visit: www.disneyiimagnet.org

Stephanie Cutter
Irving Park Real Estate

**THE IRVING PARK
SUNFLOWER PROJECT IS BACK!**

Last year, Stephanie delivered over 1,500 packets of sunflower
seeds to homes all over Irving Park!

Visit www.stephaniecutter.com/sunflowers by May 15th,
2019 to order a FREE packet of sunflower seeds and Stephanie will
drop seeds off at your home! You can also stop by our sunflower
seed supplier, Farmer's Market Garden Center (4110 N Elston Ave),
between April 11th and May 15th to pick up your free seeds!

Share photos of your
sunflowers' progress on
Facebook & Instagram using
#IrvingSunflowers to be entered
into a prize drawing!



STEPHANIE CUTTER GROUP
Coldwell Banker
(c)312-965-9600 (o)312-475-3274
stephanie@stephaniecutter.com
www.stephaniecutter.com



Thai Thai

RESTAURANT

3922 N. ELSTON, CHICAGO
DINE-IN, CARRY-OUT, DELIVERY

(773) 478-1079

OPEN EVERYDAY, EXCEPT TUESDAY, FROM 11:30 A.M. TO 9:30 P.M. CLOSED TUESDAYS.



Weston Wheelehan
Regional Sales Manager
weston.wheelehan@sunrun.com

Main 650.556.4519

2309 S Mount Prospect Rd
Des Plaines, IL 60018

Master Johnny Inc.

Carpentry and Handyman Services

3811 N. Monticello Ave.
Chicago, IL 60618

773-633-4803
chrismastro@yahoo.com

Chris Mastroianni

Owner

See photos on: Facebook/Master Johnny, Inc



Relational Psychotherapies

Joann Dakota Cimo, PhD

Licensed Clinical Psychologist

Theodora Pintzuk, LCSW

3850 N. Lawndale Ave, Chicago, IL 60618
p 773.539.9183 | f 773.509.0874
www.CoCreatePsychotherapy.com



Music Lessons

Piano, Drums, Sax,
Clarinet, Flute and
more!

maxbessesen.com
max.bessesen@gmail.com

Plant on Premises

TIPTON'S 1 HOUR CLEANERS

- * Dry Cleaning
- * Shirts Laundry
- * Draperies, Suede & Leather
- * Wedding Gowns
- * Expert Alterations

M-F (7am-7pm)
Sat (8am-5pm)

3831 N. Elston Ave.
Chicago, IL 60618
(773) 588-9028

★ ★ REAL ESTATE AND CRIMINAL DEFENSE ★ ★



312-757-5051
www.fourstarlaw.com

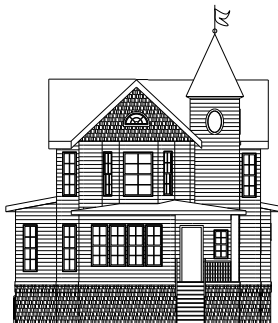
THE COSGROVE LAW FIRM L.L.C
53 W. JACKSON, SUITE 862
CHICAGO, ILLINOIS 60604

TRIANGLE

AUTO SERVICE

- * Certified Air Conditioning
- * Full Mechanical Repairs
- * Cooling Systems

4060 N. Elston,
Chicago, IL. 60618
(773) 539-5858 (773) 539-7676
www.triangleradiator.com



Barry Bebart, AIA Architect

Licensed Architect
Illinois, Michigan, Wisconsin

House Expansion, Renovation
Remodeling. Kitchen, Bath, Deck.
Commercial, Interior.

25 years of experience in Chicago.
barry@bebartarchitecture.com
773-844-4580

Take charge of your *financial future.*

Cyrus Clausen, CRPC®

Financial Advisor

847.486.9700 | 2400 Ravine Way, Ste 100, Glenview, IL 60025
cyrus.2.clausen@ampf.com
ameripriseadvisors.com/team/pioneer-wealth-planning-group

Ameriprise Financial Services, Inc.
Member FINRA and SIPC.
© 2018 Ameriprise Financial, Inc.





Progressive and dynamic, St. Viator School has been a part of Irving Park for over 110 years. We strive to develop the whole child, intellectually, spiritually and physically through a supportive partnership of award winning faculty and parents.

- PreK 3 year old program:
3 or 5 days, full or half day
- PreK 4 year old program:
5 days, full or half day
- Full day Kindergarten thru 8th grade
- Rigorous Academic Program
- World Language Program
- Full time Reading Specialist
- Award Winning Fine Arts Program
- Peacebuilders Program
- Support staff for students
- Extracurricular athletics PK3 thru 8th
- Enrichment Clubs and Summer Camp
- Caring Before and After Childcare

OPEN HOUSE • Wednesday, May 15
9:00 to 10:30 am
Tour the school while classes are in session

Personal tours available upon request
Contact our admissions director Marge Tiritilli at
mtiritilli@stviatorchicago.org



Beer & BBQ Challenge
St. Viator Parking Lot
AUGUST 3, 2019
1:00—5:00

2019-2020
Application for Admissions
forms are available online and in the school office

Please feel free to contact Marge Tiritilli with any questions or to schedule a personal tour.
4140 W. Addison St., Chicago, IL 60641 • 773-545-2173 • mtiritilli@stviatorchicago.org
www.stviatorchicago.org



John B. Murphy Elementary School
The Caring Community
3539 West Grace Street, Chicago, IL 60618
www.murphy.cps.edu

Murphy School:

- Is a Fine & Performing Arts Magnet
- Supports Academic Excellence
- Provides Computer Science for all
- Is Your Neighborhood School



Please join us in our auditorium for Community Sing on the last Friday of each Month at 8am followed by a tour.

Sponsored By Friends Of Murphy



Thinking about moving?
THE SPRING MARKET IS HERE!
Call Heather, your Irving Park area expert & trusted advisor for 18 years!

312.961.9926
HLANGE@ATPROPERTIES.COM

For Sales, Listings & Testimonials,
visit Heather-Lange.com

Find us on Facebook.com/irvingparkrealestate



St. Edward School



St. Edward School is a nationally-acclaimed elementary school offering classes from three-year-old preschool through eighth grade. Testing amongst the top 15% in the nation, St. Edward School was presented with the prestigious and coveted National Blue Ribbon Award by the U.S. Department of Education in 2017.

Touting a robust athletic program for both boys and girls as well as an extensive extracurricular lineup, St. Edward School offers each child so much more than just a seat in a classroom.

4343 W. Sunnyside Ave. Chicago Illinois 60630 | 773.736.9133
stedwardschool.com | facebook.com/stedwardschoolchicago

Breakfast
& Lunch

Pancakes
Waffles
Crepes
Blintzes
Omelets
Skilletts
Burgers
Sandwiches
Soups



3637 W Irving Park Rd. Chicago, IL 60618
Ph. 773.267.5112 Fx. 773.267.6031
www.originalalps.com



Visit our
other location
FREE PARKING - OUTDOOR PATIO

3734 W. IRVING PARK RD
CORNER OF RIDGEWAY AND IRVING PARK

WWW.BSIDEBURGER.COM

THANKS TO EVERYONE
FOR ALL YOUR SUPPORT!

Contact the 45TH
Ward Office

4754 N. Milwaukee Ave
Chicago, IL 60630
Phone: 773-286-4545
ward45@cityofchicago.org
www.ward45.org

ALDERMAN JOHN
ARENA



Google
Reviews



Vanguard
Plumbing and Sewer

Superior Plumbing Services

773.633.6139

CALL NOW!
Receive \$25.00 off any service.
First time customers only

\$25.00 OFF

We specialize in:

- Water Leak Repairs
- Faucets
- Hot Water Heaters
- Tankless Water Heaters
- Garbage Disposals
- Clogged Drains
- Ejector/Sump Pumps
- Battery Backup Systems
- Low Water Pressure Problems
- Water Booster Pumps
- Gas Line Installation & Leak Repairs
- Rehab & Custom Shower Systems
- Sewer Power Rodding
- Sewer camera

vanguardplumbing@gmail.com
www.vanguardplumbingandsewer.com



JUST LISTED
4042 N SPRINGFIELD
2 FLAT

Beautifully renovated 2 unit building that maintains the vintage charm and woodwork while incorporating all the modern day conveniences.

View the virtual tour at www.connieengel.com, then call me to see it in person!



CONNIE H. ENGEL BROKER ASSOCIATE
 548 W. Webster Ave. Chicago, IL 60614
MOBILE 773.251.3837 cengel@atproperties.com

CHE
 CONNIE H. ENGEL

@properties®



JAIIME

ANDRADE

Illinois State Representative • 40th District

Staterep40@gmail.com • (773) 267-2880

3007 W. Irving Park Rd., Suite A-Front Office



We encourage you to contact us if you need help accessing state services and to share your thoughts and ideas on ways to improve our community and state.

Facebook: IL 40th District - Jaime Andrade



Peggy Brockhaus

312.415.0042 cell
peggy@peggybrockhaus.com

@properties®




EXPERTISE:

28 Year Resident of Old Irving Park
Top Producer
Residential Buyers and Sellers
New Construction
Historic Properties
Rehab Potential
Multi-Units
Active in Surrounding Communities
Designations: GRI, CRS, CNE

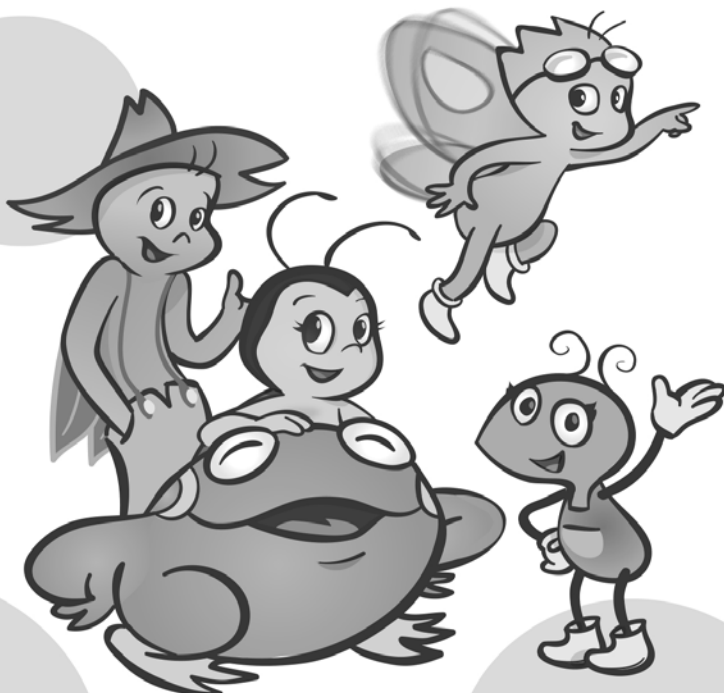
From the seller of 3937 N. Tripp Ave.

“Peggy Brockhaus is a great, friendly and professional Real Estate agent who knows and understands the market. Peggy’s knowledge and skill got me the best deal when selling my home in a multiple bid situation. She also helped me find the perfect condo. Her strong work ethic is amazing. I highly suggest Peggy for all your real estate needs. Thank You, Peggy.”

- Pat M.



**Infants · Toddlers
Twos · Preschool**



Where Friends Learn & Play™

**Now
Enrolling!**

3620 W Irving Park Rd.
LadyBug-Daycare.com
1-872-208-3448



15th Annual Gourmet

Pancake Breakfast

Father's Day 9 AM - Noon

Sunday, June 16

Independence Park Bungalow

Hamlin at Byron

• **\$ 10** Adults • **\$ 7** Seniors • **\$ 5** Children 12 and under

SPONSORED BY THE GREATER INDEPENDENCE PARK NEIGHBORHOOD ASSOCIATION (GIPNA)