

INDEPENDENCE PARK COMMUNITY

VOICE



COMMUNITY

Wine & Cheese Party, November 12

Patti Kimbel

When: Saturday, November 12

Time: 4:00 p.m. - 7:00 p.m.

Where: Color Club located at 4146 N. Elston Ave.

Cost: \$55 per person, \$65 per person at the door

Why: It's fun and all proceeds benefit the Independence Park Farmers Market and John B. Murphy School

GIPNA's annual Wine & Cheese Party will return as an indoor event on November 12. Last year we pivoted to an outdoor event and many seemed to enjoy the lively lawn party experience. However, given Chicago weather we might not get so lucky a second time around.

The most exciting announcement is our venue. We are delighted to partner with our new local hotspot, the Color Club, which is both an artists' studio and a community event space at 4146 N. Elston. Thankfully, it's just



a short walk or possible stumble home for some of us. The party will be in their newly remodeled ballroom on the second floor.

The owners have graciously offered to waive their rental fees for the space to support our worthy cause. For those of you who may have yet to visit the newly remodeled space, this will be a treat! For those loyal newsletter readers, you may recall a prior article all about the Color Club detailing their wonderful renovations and neighborhood mission. Checking out their website, it's exciting to see all of the new and increasing list of events being hosted, including comedians, artists' receptions, and unique events like a songwriting roundtable. They also provide space for weekly dance and movement classes.

Be sure to save your dollars for our silent auction items! What could be better than an

early evening soiree sampling delicious wines, socializing with your friends and neighbors, and outbidding your fiercest competitor in the silent auction all while supporting our great neighborhood? Oh, yeah, maybe the return of our infamous cork game will top it off.

Buy your tickets now at <https://gipna.org/wineandcheese> or scan the QR code. See you on Nov 12!



The November meeting is Tues., Nov. 1, 7 p.m. The December meeting is Tues., Dec. 6, 7 p.m.

Join us online via Zoom. Meeting I.D.: 819 2958 6855, Password: GIPNA.

COMMUNITY EVENTS

NOVEMBER

TUES., NOV. 1—GIPNA Board Meeting, 7 p.m., online Zoom Meeting ID: 819 2958 6855, Password: GIPNA,

TUES., NOV. 1—La ofrenda del Día de los Muertos. See murphy.cps.edu for information.

MON., NOV. 7—AFAC Meeting, 6:30 p.m., Athletic Field Park.

TUES., NOV. 8—Murphy Dine & Donate with Portillo's. See murphy.cps.edu for information.

WED., NOV. 9—CAPS Beat 1732 Meeting, 6:45 p.m., Athletic Field Park.

MON., NOV. 14 – NOV. 17—Murphy PTO Book Fair. See murphy.cps.edu for information.

WED., NOV. 16—FOM Meeting, 7 p.m. See friendsofmurphy.org/events for info.

DECEMBER

MON., DEC. 5—AFAC Meeting, 6:30 p.m., Athletic Field Park.

TUES., DEC. 6—GIPNA Board Meeting, 7 p.m., online Zoom Meeting ID: 819 2958 6855, Password: GIPNA.

MON., DEC. 12 – JAN. 20—Murphy Match Fundraiser. See friendsofmurphy.org/events for info.

WED., DEC. 21—FOM Holiday Happy Hour, 7 p.m. See friendsofmurphy.org/events for info.

NOVIEMBRE

MARTES, NOV. 1—Reunión de la Junta de GIPNA, 7 p. m., ID de reunión de Zoom en línea: 819 2958 6855, Contraseña: GIPNA,

MARTES, NOV. 1—La ofrenda del Día de los Muertos. Visite murphy.cps.edu para obtener información.

LUNES, NOV. 7—Reunión AFAC, 6:30 p. m., Parque Athletic Field.

MARTES, NOV. 8—Murphy Dine & Donate con Portillo's. Visite murphy.cps.edu para obtener información.

MIÉRCOLES, NOV. 9—CAPS Beat 1732 Reunión, 6:45 p. m., Athletic Field Park.

LUNES, NOV. 14- NOV. 17—Feria del Libro de Murphy PTO. Visite murphy.cps.edu para obtener información.

MIÉRCOLES, NOV. 16—Reunión FOM, 7 p.m. Visite friendsofmurphy.org/events para obtener información.

DICIEMBRE

LUNES, DIC. 5—Reunión AFAC, 6:30 p. m., Parque Athletic Field.

MARTES, DIC. 6—Reunión de la Junta de GIPNA, 7 p. m., ID de reunión de Zoom en línea: 819 2958 6855, Contraseña: GIPNA.

LUNES, DIC. 12 – ENE. 20—Recaudación de fondos de Murphy Match. Visite friendsofmurphy.org/events para obtener información.

MIÉRCOLES, DIC. 21—FOM Hora feliz festiva, 7 p.m. Visite friendsofmurphy.org/events para obtener información.

SCHOOLS

Meet the New Interim Principal at Disney II

Ellen Ryan

There's a new face in our community. Meet Iliana R zodkiewicz (zhoo-d-ke-vich), who was named the new interim principal at Disney II Magnet School in August. Iliana was born and raised in Chicago by Puerto Rican parents. Her grandfather came here in the 1940s and wanted his three daughters to have every opportunity available. Education was instilled in them and then on to their kids from the get-go. Iliana's mom was and has always been her inspiration. After facing some challenges and barriers, her mother continued with her education, eventually earning a Doctorate in Education and paving a path for other Latinx students in higher education.

Iliana attended Newberry Academy, a very impactful experience for her. It was the United Nations – with every single



culture represented – and she loved it! After attending Lincoln Park High School and UIC, she became a bilingual teacher at Prieto Math & Science Academy. Interested in teaching high school, she next moved to Schurz High School where she was given some leadership opportunities. Intrigued with the possibility of furthering her leadership skills, she applied for and was accepted into a highly selective one-year residency where she received mentoring and got experience in a leadership role. She knew she had found her calling. Iliana became the assistant principal at DII and three years later was named the interim principal.

Iliana says DII is a hidden gem in the city. Parents know it's a great option for their kids. There is no need to take a selective enrollment test, as Disney II 8th graders are automatically accepted into DII high school. Non-Disney II families apply through GoCPS and acceptance is lottery based. It is only one of two K-12 public schools in the city. DII is located on two campuses - the Kedvale campus (K-6) in Old Irving and the Lawndale campus (7-12) here in Independence Park. Iliana splits her time evenly between the two campuses. The Disney II staff, inclusive of her three Assistant

Principals, is phenomenal and they truly help make both campuses run smoothly even when she is not physically at one of the campuses.

Each campus's students have opportunities to spend time with students from the other campus. Several of the Lawndale students walk over to the Kedvale campus weekly to read to the younger students in English and Spanish. This October the Kedvale campus teachers walked students over to the Lawndale campus for Latinx Fest where they experienced singing, dancing and art. This interaction is intentional and Iliana loves bringing the two campuses together. An average of 90% of the K-6th graders at the Kedvale campus continue with their Disney II education at the Lawndale campus for 7th through 12th grade.

Iliana relishes DII's multiculturalism. Several languages are spoken at DII and the school is more than 50% Latinx. Iliana is passionate about public service and mindful of being a Latina principal in CPS as Latinas are very underrepresented in that role, especially at the high school level. She often thinks back on her own experience as a bilingual CPS student of color and feels pride and gratitude that she can lead a school and be a role model for many students from her same demographic.

Biggest challenge? The toll of the pandemic-induced at-home learning. Several students came back unsure how to re-socialize and resolve conflict. The DII staff saw

continued on page 3

INDEPENDENCE PARK COMMUNITY

VOICE

The Independence Park Community Voice is published by the Greater Independence Park Neighborhood Association (GIPNA), a 501(C)3 corporation.

This newsletter is for the Independence Park community. Please consider renewing your membership or joining GIPNA now. We need your support. Thank you.

Editorial: Sue Ryan
Photographers: Jackie Bravo and Robin Hochstatter
Staff Writers: Pat Clark, Patti Kimbel, Emilija Novitovic, Ellen Ryan, Sue Ryan, Gretchen Siffing

Special Contributors: Lorraine Antieau, Alison Benjamin, Erica Dreisbach, Kim Laurel and her dog Andy Jack, Liz Mills, Dr. Shick, Craig Shutt

Calendar Translation: Jackie Bravo
Copy Editors: Suzanne Edwards, Sharon Gilbert, Logan Jaffe, Adam Weiner

For submissions for January/February 2023 Issue:

Editorial Deadline:
December 10, 2022
Advertising Deadline:
December 10, 2022

The editorial board reserves the right to edit all submissions. Errors in advertisements are the sole responsibility of the advertiser.

E-MAIL: INFO@GIPNA.ORG
MAIL: GIPNA, P.O. BOX 18184
CHICAGO IL 60618

WEBSITE: WWW.GIPNA.ORG

The Greater Independence Park Neighborhood Association (GIPNA) is dedicated to maintaining and enhancing the quality of life in the Independence Park community by involving, informing, and encouraging people to participate in matters relating to the community, and by protecting the historical, social, cultural, and architectural character of the neighborhood.

This all-volunteer publication is made possible by the creative voices of our community and the generous support of area advertisers.

Join GIPNA on Facebook

Check out the GIPNA Facebook page for news, alerts, and conversation with your neighbors. Post your own comments to get the word out on your activities and announcements. To find the page and like it, search for GIPNA: Greater Independence Park Neighborhood Association.

GIPNA BOARD OF DIRECTORS

Kevin Haight, President
Scott Dewey, Vice President
Sharon Sears, Secretary
Alison Benjamin, Treasurer

Board of Directors

Lorraine Antieau
Bobbie Bolociuch
Jackelin Bravo Vicere
Amy Mastroianni
Wes Matusha
Susan Ryan
Greg Shea

Directors-at-Large

Jodie Bargeron
Pat Clark
Robin Hochstatter
John Kuczura
Dickie Nichols
Delphine Ruiz

GIPNA BLOCK REPRESENTATIVES

3800 Avers - Candace Wayne
3600 Byron - Jackie Ropski
3700 Byron - Stephanie and Jeremy Smith
3800 Byron - Suzanne Edwards
3900 Byron - Roseann Seablom
3600 Central Park - Sharon Gilbert
3700 Central Park - Bob Brutvan
3800, 3900 N. Central Park- Joe and Annie Bailey
3900 Dakin - Joel Contreras
3600 Grace - Alison Benjamin
3700, 3800 Hamlin - Sharon Nichols
3900 Hamlin - Linda Lehman
3700 Irving Park Road - John Kuczura
3800 Irving Park Road - Linda Lehman
3700 Lawndale - Dorene Jordan
3800 Lawndale - Mark and Casey Watkins
3900 Lawndale - Cy Clausen
3600, 3700 Monticello - Pat Clark
3800 Monticello - Barbara Shaw
3900 Monticello - Cindy Schuch
3700 Ridgeway - Dawn and John Urban
3800 Ridgeway - Karen Fontanetta
3900 Ridgeway - John and Sang Kuczura
3800 Springfield - Roseann Seablom

Principal continued from page 2
this as an opportunity to implement scads of programs. From classes on empathy and proper social media usage to teaching how to share space and play at recess, students quickly remembered how to be with one another again. Additionally, the partnership with parents and families has made this support unified and stronger.

Her biggest joy? Seeing students take on their own leadership roles – be it ideas for fundraising or new clubs or resolving disputes using the skills they have learned at DII. Maybe one of them will – like Iliana – go on to be a CPS principal.

RESOURCES

Important Phone Numbers

From the Office of State Senator Cristina H. Pacione-Zayas

Mental Health

Call4Calm Text Line- Text TALK to 552020 for English
Text HABLAR to 552020 for Spanish

Envision Unlimited- 773-769-2139

Kedzie Center- 773-754-0577

Rincon Family Services- 773-564-9070

Housing Assistance

Bickerdike Redevelopment Corp.- 773-227-6332

Hispanic Housing Development Corp.- 312-291-5421

Northwest Side Housing Center- 773-283-3888

Social Services

Albany Park Community Center- 773-509-5657

HANA Center- 773-583-5501

Logan Square Neighborhood Assoc.- 773-384-4370

North River Commission- 773-478-0202

Health Care

ASI Home Services- 773-278-5130

Community First Medical Center- 773-282-7000

COVID-19 Rapid Testing, North Shore Clinical- 773-570-6510

Erie Helping Hands Health Center- 312-666-3494

Oak Street Health Portage Park- 773-644-5989

Food Assistance

Chicago Hope, Inc.- 773-499-9763

Open Arms Ministry Food Distribution Center- 773-987-4677

Polish American Assoc. Pantry- 773-282-8206

Irving Park Community Food Pantry- 773-283-6296

Government Resources

Attorney General's Fraud Hotline- 1-800-386-5438

Find a Child Care Provider- 312-823-1100

IL Application for Benefits Eligibility- 1-800-843-6154

IL Department of Employment Security- 1-800-244-5631

IL Department of Public Health Hotline- 1-800-889-3931

IL Department of Aging Senior Helpline- 1-800-252-8966

COMMUNITY

Have an Idea for the Newsletter?

If you want to see something in the neighborhood highlighted or just want to provide feedback, reach out to us at newsletter@gipna.org.

Ash Tree FAQs

*Lorraine Antieau,
GIPNA Tree Steward*

One of the most pleasurable aspects of being GIPNA's Tree Steward is meeting our neighbors and having conversations about trees. Recently, neighbor Fazar Chaudry asked such good questions about our Ash Tree Fundraiser that I thought others might have the same questions about the Emerald Ash Borer (EAB) and its danger to the many ash trees within GIPNA's borders.

What is an Emerald Ash Borer and how does it impact the trees in our neighborhood?



EAB is a small green beetle, no bigger than a penny, native to Asia, and originally discovered in Michigan in 2002.

Since then, it has spread to many states, killing thousands of ash trees along the way. First spotted in Illinois in 2006, it is now found throughout the state, including our own neighborhood. The life cycle of EAB involves mature insects laying eggs in the bark of ash trees. When the



larva hatch, they feed under the bark, creating paths known as galleries. This interrupts the tree's vascular system so that water and nutrients cannot reach the top

branches, and the branches begin to die off. Eventually, as more and more of the tree



is affected, dead branches will become a falling risk to people. It is recommended that an ash tree be removed when 30% of its branches are affected.

Why save the ash trees if they're sick anyway?

First, we want to preserve the canopy (tree coverage) in our neighborhood as long as possible. Mature trees contribute greatly to the environment: increased property values, improved air quality, flood control, cooling. Second, to give our newly planted young trees years to grow until they are also contributing to the canopy. Third, to give us time to plant even more trees, leaving a legacy of leafy, tree-lined streets for future residents, who will be as impressed as so many of us were when we moved into our beautiful neighborhood.

What does treatment involve?

The treatment is an insecticide that is injected into the bark of the tree or the soil at the base of the tree. The tree's vascular system then carries the insecticide throughout the tree and the ash borers consume it as they are eating. This is done as prevention for trees that are not infected as well as treating trees that already have the ash borers.

How often does it have to be done?

The treatment is required every two years to keep the ash tree population healthy. As the city no longer treats the trees at all, our neighborhood has undertaken the ongoing treatments at the cost of approximately \$100/tree biennially.

The number of infected vs. healthy trees in the neighborhood?

In 2020, 48 trees received treatment. The city has removed three ash trees since then, and there are others that are not in great shape that will likely be removed before the 2024 treatments. All of the ash trees in the parkways within GIPNA's borders have received treatment this year. We will assess the number of healthier trees versus the number of sicker trees before the 2024 treatment to ensure that funds are used for trees that are likely to survive and thrive.

What is the fundraising goal?

Our goal is to raise \$5,000 to cover this year's treatment bill of \$4,950. We also hope to build a cushion for 2024's treatment, assuming increased costs for each biennial treatment. At this writing, we have raised \$3,787, and we are so grateful to each person who has contributed so far! We do have a ways to go to meet our goal, and if you'd like to make a donation, please visit gipna.org and click on the Save Our Trees text on the left.

If you exceed the fundraising goal through your efforts, are there other projects or priorities that donations will support?

Our hope is to establish a fund that will care for the trees in even-numbered years from 2020 on; therefore, any funds raised above this year's current need will be held in a specific account set aside for 2024's treatment and into the future. Should a time come when the ash trees no longer require treatment, those funds would be used for other tree projects in the neighborhood. Healthy trees benefit us all!

If you're interested in more information about the Emerald Ash Borer and its management, the Morton Arboretum website has a useful brochure for communities at: <https://mortonarb.org/app/uploads/2021/04/EAB-and-Your-Community.pdf>

Questions? Contact Lorraine Antieau, GIPNA Tree Steward, at gipnatrees@gipna.org.

SCHOOLS

Murphy Match 2022

Gretchen Siffring

Friends of John B. Murphy Elementary School (FOM) are excited to work with you, our community, to raise money for the students at Murphy through our Murphy Match 2022!

Murphy Match will run from December 12, 2022 - January 20, 2023. During this time, any donation you give to Friends of Murphy will be matched by an anonymous donor!! This means your donation will have twice the impact for Murphy!

Funds raised through FOM have

been used to expand the arts, improve the facilities, and enrich the experiences of students and staff at Murphy. Here are just a few examples of how your donations have made a difference:

- Free After-School Theater Programs
- New Projector and Screen for the Auditorium
- New Gym Floor & Rock Climbing Wall
- Additional Safety Equipment to reduce the spread of COVID
- Food and Clothing for Families experiencing difficult times
- Coming Soon... Outdoor Basketball Hoops!

Thank you in advance for your contribution to support your neighborhood elementary school!

Carlson Community Services Updates

Liz Mills

Three Brothers Garden Wins Chicago Excellence in Gardening Award (CEGA).

Carlson Community Services' Three Brothers Garden received a 2022 award from Chicago Excellence in Gardening Awards (CEGA) in late September. Three Brothers Garden was recognized in the Community Vegetable Garden category. As a food pantry garden, all crops grown in the garden are donated to the Irving Park Food Pantry.

According to CEGA, "The Chicago Excellence in Gardening Awards are Chicago's only citywide gardening honors recognizing the hard work and creativity that make our city a healthier, more beautiful and more sustainable place. They support the pride we take in our neighborhoods and help us build our communities." For more information about CEGA, visit chicagogardeningwards.org.

The award ceremony was held at the Wild Blossom Meadery on September 24. Garden volunteer Rebecca Haneberg and

Carlson Executive Director Liz Mills attended the ceremony. The garden was presented with an all-weather sign to be installed on site. Many thanks to all the garden volunteers and supporters who contribute to the garden and its mission to provide healthy vegetables to food pantry clients.

Founded in 2009 and a program of Carlson Community Services, Three Brothers Garden is located at 4107 N. Pulaski. Through early October, the garden has raised 260 lbs. of vegetables for the Food Pantry. Thanks to the neighborhood gardeners who brought their surplus to the garden for delivery to the Food Pantry as part of our Plant a Row for the Hungry program!

Irving Park Fine Arts Committee Presents A Tribute to Sondheim, Nov. 13.

The Irving Park Fine Arts Committee is pleased to present the first concert in its 29th season, A Tribute to Sondheim, on Sunday, November 13, at 2:00 p.m. The concert will honor the late composer and lyricist Stephen Sondheim who passed away in November 2021. Credited with reinventing the American musical, Sondheim's works include beloved musicals Into the

Woods, The Fantasticks, Sweeney Todd, Company and Sunday in the Park with George.

The concert will feature vocalists Stephanie Stockstill, Rachel Klippel, Lazaro Estrada and Christopher Richard, accompanied by pianist Cody Bradley. Both well-known and lesser-known songs from the Sondheim catalog will be featured. The concert will be held at Irving Park Lutheran Church, 4100 N. Harding Ave. The concert is free, but donations to support future programming are gladly accepted.

The Irving Park Fine Arts Committee was created by Roger Bingaman, Director of Music at Irving Park Lutheran Church. The intent of the series is to bring high quality, professional music to the northwest side of Chicago, free of charge. Check the Carlson web site for the date and performers

for our December holiday program.

Carlson Community Services connects the Irving Park community with programs that enrich lives through education, culture and service. For more information, visit carlsoncommunityservices.org or contact Liz Mills at 773.398.6766 or lizmills@carlsoncommunityservices.org.



SCHOOLS

A Glimpse Into Murphy Extracurricular Activities

*Dr. Rebeca Shick
Principal, Murphy School*

After the height of the COVID-19 Pandemic, Murphy School is up and running (quite literally) with sports and other extracurricular activities. This fall we are offering Boys Soccer, Girls Volleyball, Boys and Girls Cross Country, CPS Lego League, Girls in the Game, Rock Band and Violin with Music House, and so many more after school classes. The importance of these activities goes far beyond winning a competition or a performance. Embedded in all of

these classes, sports, and other extracurricular activities is the building of new relationships, skills, and capacity to handle stress, challenges, and the ups and downs of learning. Murphy School prioritizes the Social Emotional Learning of our students in order to support the development of healthy relationships, positive decision making, self-regulation, and a strong sense of self and identity. It brings us a lot of joy to be able to offer these opportunities to young people and to see their development into strong critical thinkers and problem solvers. Sign up for our Weekly News at <http://eepurl.com/gAISEL> to follow what is happening at Murphy School. If you would like to schedule a tour, please reach out to Dr. Shick at 773-534-9892.



Taylor Made Landscapes

Emilija Novitovic

Maureen Taylor is a local award-winning landscape designer. She went back to school to study Landscape Design at age 49, and received degrees in horticulture and landscape design. "I'd always wanted to be a landscape designer and I had a challenge in my life that spurred me to go back to school. I've never looked back on that decision. I have been a hobby gardener for as long as I can remember. Both my parents were gardeners, and my mother, in particular, was very proud of her garden." Maureen opened Taylor Made Landscape Design in 2010. Since then she has started several community gardens in Old Irving Park where she lives. In 2007, Maureen won the prestigious Mayor Daley's Landscape Award for her own backyard. She has also received the Angie's List Super Service Award several years in a row.

I asked Maureen if she had a typical design for Chicago gardens. Although her designs cover a wide range of clients requests and tastes, she noted, "I suggest adding one or two trees to a

property. Trees are not only good for the environment, but certain trees such as crabapple and oak are beautiful and provide food for birds over the winter. While shrubs add structure, it's a good idea to have 10-20% evergreens for winter interest. I always add a few pollinators to every garden I install." Maureen noted that many clients are now using composting services.

Maureen's list of personal favorites include Amelanchier trees. These trees are also known as Serviceberry and produce beautiful spring flowers, summer edibles for humans and birds, and fabulous fall color. "There are more and more beautiful panicle hydrangeas that are reliable bloomers, and they are being bred in all sizes."

Not sure how to prepare your garden for the cold weather? Maureen advises holding off on the fall cleanup. "Many plants have properties beneficial to insects and birds. Plus leaving the plant in place will gather leaves at the base, providing some insulation from winter winds. These leaves will also hold on to winter snow further insulating the crown of the plants and providing moisture as it melts."

You can view Maureen's work and learn more at <https://taylormadelandscapedesign.com>.



Kickball Tournament Returns

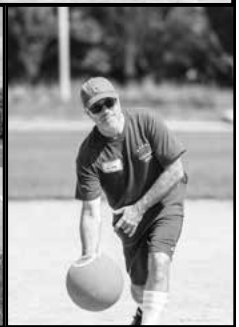
Sue Ryan

Team Red (aptly named for the players' t-shirt color) was victorious over Team Green and Team Blue in the second annual Kickball Tournament at Independence Park on September 17. Members of the winning team are Kevin Haight, Hasnain Jetha, Steve McKenzie, Khalil Ryan-Jetha, Sara Ryan-Jetha, Bridget Prymski, Pawel Prymski, and Ellen Ryan.

The sunny blue skies provided a beautiful backdrop to the good-natured competition. Team Red had the powerhouse duo of Kevin Haight and Khalil Ryan-Jetha who fielded every ball that came their way. Team Green's Megan Mathias's pitching was pitch-perfect. This year's tournament featured a crew from Monticello, friends and family of Chris and Amy Mastroianni, colleagues from the Mathias Law Office and other GIPNA neighbors. Monticello won the participation award with fourteen players. How could you not enjoy being out on a crisp fall day, chatting with your teammates and exercising a few muscles you perhaps forgot you had? And with any team event, there is the camaraderie of having a shared goal to dominate the competition. After the tournaments, players

and spectators gathered to munch on snacks while some visited local sponsors for a cold beer and late lunch.

Thanks to all of our sponsors: JT's Genuine Sandwiches (top sponsor), Big League Burgers, Master Johnny, Inc., Hearth & Crust, which donated \$20 gift certificates to winning team members, Golden Leaf Liquors and the Olive Garden, which donated \$10 gift certificates for fun player prizes. Thanks also to Amy Mastroianni for her organizing prowess with assistance from Kevin Haight and Robin Hochstatter. The goal next year is to have every street in the GIPNA boundaries to field a team. It's never too early to start stretching those muscles and watching kickball YouTube videos.



Katie Bastion Strong: A Remembrance

Karen Reyes

Editor's note: On Saturday, October 1, family, friends, and neighbors of Katie Strong gathered on the 3700 block of Lawndale to remember her life that was tragically cut short in August. At the Celebration of Life, friends and neighbors fondly recalled the Katie they knew. As people shared their stories, a beautiful rich tapestry of my neighbor appeared. Katie drew people towards her and they were forever changed for the better. Below is Katie's obituary written by her friend, Karen Reyes.

Kathryn Bastion Strong, (née Kathryn Melissa Bastion) loving mother, wife, and friend, died in a car accident while on a grand adventure in Scotland with her mother, Mary Lou Mauch and brother, Jared Bastion. Mary Lou and Jared died in the accident on August 10 and Katie died from her injuries on August 13, 2022, at the age of 46. Katie gave the gift of improving the lives of four people through organ donation. Katie was also preceded in death by her father Fred Bastion, her older brother Brian Bastion, and her stepfather David Mauch Jr.

Katie was born on October 19, 1975, in Bloomington-Normal, IL, to Mary Lou Mauch (née Ellis) and Fred Bastion. She graduated from University High School and attended Colorado State University where she first discovered her lifelong love of nature, studying Forestry in hopes of becoming a park ranger. She adapted this plan when she had to return home to care for her ailing father. She completed her BA at the University of Illinois at Urbana Champaign, where she met her future husband, Chris Strong. After living abroad in Barcelona, she moved to Chicago to continue school and work at the University of Illinois at Chicago,



teaching Spanish for nine years. She changed careers and worked for over seven years at the American College of Surgeons (ACS), quickly attaining the title of Senior Manager of Trauma Education Programs. During her time at ACS, she earned a Master's Degree in Learning Design & Technology from Purdue in support of her career and learning and continuously sought higher education experiences.

Katie is survived by her three wonderful daughters, Bela Kathryn Strong (17), Mae Abigail Strong (15), and Gillian Fern Strong (10). As a mother, she allowed her daughters space to discover their own paths. She valued independence and instilled in her girls an authorship of their own lives that has led them to become unique, talented, funny individuals. Katie is also survived by her loving husband of 16 years, Chris, with whom she grew a singular and rich partnership of balance. They met in 1999, and soon after, traveled together in Spain, confirming an incredible connection and love. Katie and Chris built such a caring and welcoming home that their extended families of siblings and grandmothers intermingled entirely into a larger tight-knit mega family.

Katie was a fiery, principled, funny person, who embraced and laughed at the imperfections of life. She did not shy away from conflict and had strong beliefs, but she was consummately fair-minded, always considering multiple perspectives. She was all the more real and vibrant for her rough edges, which she embraced as she lived life to its absolute fullest.

Pantry's Coat Drive Underway

Craig Shutt

The Irving Park Food Pantry's annual coat drive continues this month with new and gently used winter coats still being accepted until November 14 for clients and their families in the 60641 and 60618 ZIP codes.

We also are requesting hats, scarves, mittens and other cold-weather gear. Please do not donate sweaters, sweatshirts, boots, or other clothing. We are happy to provide receipts for all new coats donated for tax deductions and encourage everyone to keep an eye out for good sales on men's, women's and children's coats.

Donations can be taken to any of these participating groups:

- # 16th District—Jefferson Park Police Station, 5151 N. Milwaukee Ave.
- # 17th District—Albany Park Police Station, 4650 N. Pulaski Rd.
- # Big Helpers store, 4184 N. Elston Ave. (10 a.m. to 4 p.m., Monday through Friday).
- # Disney II Magnet School, 3815 N. Kedvale Ave. (inside main entrance, 8:30 a.m.-3:30 p.m.)
- # Disney II Magnet High School, 3900 N. Lawndale Ave. (inside main entrance, 8:45 a.m.-3:45 p.m.)
- # Irish American Heritage Center, 4626 N. Knox Ave.
- # Irving Park YMCA, 4251 W. Irving Park Rd. (dropbox in lobby)
- # Jet's Pizza, 3951 N. Kimball Ave. (dropbox in waiting area)
- # J.T.'s Genuine Sandwich Shop, 3970 N. Elston Ave. (closed Mondays)
- # Old Irving Brewing Company, 4419 W. Montrose Ave. (noon to 10 p.m.)
- # Perkulator Coffee, 6032 W. Irving Park Rd. (during operating hours)
- # Front Porch at 3822 N. Tripp Ave.



(anytime)

If you have a large donation or want to run a drive to gather coats, please email info@irvingparkfoodpantry.org with questions or to arrange delivery.

Thank you to Barry Sorkin, owner of Smoque BBQ, 3800 N. Pulaski Rd., who reached out to the Pantry for the best way to help. Learning of our difficulties in stocking bread, especially in the second week when we do our Tuesday and Wednesday distributions, he agreed to donate 100 loaves of wheat and white bread each month directly from his supplier. We appreciate his help in solving a recurring challenge!

Thank you to Earth Breeze, which donated two cases of its eco-friendly laundry-detergent sheets for volunteers and clients. They are given out at the toiletries station along with a variety of personal hygiene products for clients to choose among.

The Pantry's Holiday Gift drive also is underway with stockings of gifts provided to clients' children up to 12 years old during December. Amazon and Target registries for the items we are requesting will be posted to our Facebook page. Monetary donations can be made via the PayPal link at www.irvingparkfoodpantry.org or via check to Irving Park Food Pantry, 4256 N. Ridgeway Ave., Chicago IL 60618.

Thank you for all your support in helping us meet our mission of being "Neighbors Helping Neighbors!"

Music Man and Friends

Luc Schultz

Howdy neighbors! I've been happily calling the 3700 block of N. Monticello my home for a while now, so I suppose it's time to formally introduce myself. My name is Luc. I moved into this house as a 22-year-old punk with four other friends about seven years ago. We were having very loud band practices three nights a week, had a couple rock shows in the basement, and had a cute dog named Tuna that loved to yap her head off. It didn't take long for the neighbors on one side of our house to board up their basement windows. Whoops! The house and I have gone through quite a few changes since then and I'm happy to report my

relationship with the neighbors has improved tremendously :)

I live with my wonderful partner Carley and her much calmer dog Leia, as well as my best friend and bandmate Joe and his cat Marvin. Carley makes custom clothing, sculptures, and teaches sewing at the School of the Art Institute of Chicago (SAIC), Lillstreet Art Center, and privately. She is a real wizard and if you ever need a custom garment, hit her up! Joe is a woodworker and a film photographer with a whole darkroom in the basement for processing and printing photos. The band Joe and I play in is called Floatie. We've been a band since 2018, but the four members have been playing music together in different bands/projects for over 10 years now. Joe plays an instrument called Bass VI that is somewhere in between a guitar



and a bass, and I play the drums. Our other two best friends play guitar and sing in the band too. People call the genre "frog rock" due to our leaping nature. We recently got back from our first tour in July! All of the band practices paid off and we were able to get our own practice space where we don't bother anyone. Outside of playing music, I am a licensed massage therapist and a lover of gardening, rock climbing, and computer animation.

Over the years I've had the

pleasure of meeting quite a few of you and hope to keep meeting more people around the neighborhood. Thank you all for making this neighborhood great! It's such a treat to live here with you. See you around!

P.S. Check out Carley's work at www.carleybrandeaux.com! You can listen to Floatie anywhere you stream music and our next show is November 5th at Sleeping Village, 3734 W. Belmont Ave. Find Joe's photography on instagram: @dobert.reniero.



SENIOR RESIDENCES

CLARENDALE — SIX CORNERS —

In the Heart of It All

On a storied intersection of Six Corners, on Chicago's Northwest Side, you'll find 10 floors of stylish amenities and hospitality services. Discover Clarendale Six Corners. Coming Fall 2022.

Senior living you deserve.

CALL 773-299-1874 TO SCHEDULE YOUR PERSONAL EXPERIENCE.

Independent Living ■ Assisted Living ■ Memory Care

Community
4715 W. Irving Park Road
Chicago, Illinois 60641

Information Center
4004 N. Cicero Avenue
Chicago, Illinois 60641

ClarendaleSixCorners.com

... On the Dog Side

K. Laurel & her dog Andy Jack



Andy's Haiku for the Holidays...

Sharing with many
makes Holidays most happy
Season's Greetings All



Thai Thai

RESTAURANT

3922 N. ELSTON, CHICAGO
DINE-IN, CARRY-OUT, DELIVERY

(773) 478-1079

OPEN EVERYDAY, EXCEPT TUESDAY, FROM 11:30 A.M. TO 9:30 P.M. CLOSED TUESDAYS.

Independence Parka

by erica dreisbach



Still thinking a lot about
litter (my nemesis!!)

... but is litter any different
from sending trash to
landfill?

"I bet the GARBAGE really
prefers being all together.
It's like going to college!"



indyparka

TRIANGLE

AUTO SERVICE

- * Certified Air Conditioning
- * Full Mechanical Repairs
- * Cooling Systems

4060 N. Elston,
Chicago, IL 60618
(773) 539-5858 (773) 539-7676
www.triangleradiator.com

Thai Bodywork, Swedish Massage,
Yomassage® and Reiki.

Relax. Release. Restore.
Mind. Body. Soul.

*Relieves tension *Reduces pain *Increases range of motion
and flexibility *Boosts energy *Calms nervous system *Works
well with PTSD sufferers and talk therapy patience

YHealingArts@gmail.com 773-490-9653

YHealingArts.com Amber Gillogly LMT

Recommended by Dickie Nichols and Pat Clark

CoCreate

Relational Psychotherapies

Joann Dakota Cimo, PhD

Licensed Clinical Psychologist

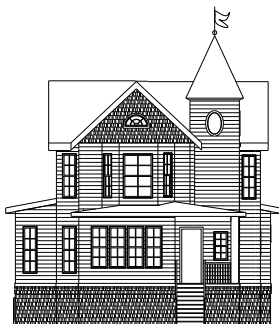
Theodora Pintzuk, LCSW

3850 N. Lawndale Ave, Chicago, IL 60618

p 773.539.9183 | f 773.509.0874

www.CoCreatePsychotherapy.com

GIPNA



Barry Bebart, AIA Architect

Licensed Architect
Illinois, Michigan, Wisconsin

House Expansion, Renovation
Remodeling. Kitchen, Bath, Deck.
Commercial, Interior.

25 years of experience in Chicago.

barry@bebartarchitecture.com

773-844-4580

Master Johnny Inc.

Carpentry and Handyman Services

3811 N. Monticello Ave.
Chicago, IL 60618

773-633-4803

chrismastro@yahoo.com

Chris Mastroianni

Owner

See photos on: Facebook/Master Johnny, Inc

Have you listened to EdTalks?

Fr. Dominic and Paul Minarik's podcasts inspire us to laugh and learn and challenges us to think. Tune into their weekly podcast. Visit stedparish.org to find a host of options to listen or even watch on YouTube.



Scan to see our YouTube channel



Elementary School

Progressive and dynamic, St. Viator School has been a part of Irving Park for over 110 years. We strive to develop the whole child, intellectually, spiritually and physically through a supportive partnership of award winning faculty and parents.

PreK 3 year old program:

3 or 5 days, full or half day

PreK 4 year old program:

5 days, full or half day

Full day Kindergarten thru 8th grade

Rigorous Academic Program

iReady, Achieve 3000 & Lexia Core 5

STEAM Enrichment Curriculum

World Language Program

Full time Reading Specialist

Award Winning Fine Arts Program

Peacebuilders Program

Support staff for students

Extracurricular athletics PK4 thru 8th

Enrichment Clubs and Summer Camp

Caring Before and After Childcare



Join our community!

i-Ready data has shown outstanding growth for our students, despite the pandemic.

Tours available Tues, Wed, and Thurs
9:00—1:00 by appointment

2022-2023 Application for admissions
forms are available online and in the school office.
Select seats still available.

Please feel free to contact Marge Tiritilli with any questions or to schedule a personal tour.
4140 W. Addison St., Chicago, IL 60641 • 773-545-2173 • mtiritilli@stviatorchicago.org
www.stviatorchicago.org

**Connie Engel
Selling Where
YOU ARE**



Find Off Market Listings Here



773.251.3837
cengel@atproperties.com



DIANE PALUMBO
+1 773-213-0605
LADYDIMAGICALPOTIONS@GMAIL.COM



FACEBOOK **ETSY STORE**
LADY DI'S LADYDI
MAGICAL POTIONS MAGICALPOTIONS

I've been blessed to live in this neighborhood for 26 years. I'm so excited to announce Lady Di's Magical Potions which are handmade aromatherapy sprays. I use only the highest grade essential oils. No additives or preservatives. My mission is to provide these products to lift your mind, body and spirit.

Love, Diane

**Breakfast
& Lunch**

- Pancakes
- Waffles
- Crepes
- Blintzes
- Omelets
- Skillet
- Burgers
- Sandwiches
- Soups



**Thank you, Bob,
for your years of supporting GIPNA**

3637 W Irving Park Rd. Chicago, IL 60618
Ph. 773.267.5112 Fx. 773.267.6031
www.originalalps.com

MURPHY IS YOUR NEIGHBORHOOD SCHOOL!



*"There is no better place to create
a caring community than in our
schools – the heart of our future."*



scan me!



**Create
YOU
@ Disney II**

A place to learn, discover, and do.

Disney II Magnet High School

will be holding an

**OPEN HOUSE FOR
PROSPECTIVE STUDENTS**

Sunday, November 6th from 11 am - 2 pm

Learn more at: www.disneyiimagnet.org

Students in grades K-9 can apply to Disney II via the GoCPS lottery
 The application for 2023-24 will close December 2, 2022.

Disney II accepts students from all Chicago neighborhoods.



Disney II Magnet High School is the proud recipient of a 2021 Blue Ribbon School award.

DISNEY II MAGNET ELEMENTARY - KEDVALE CAMPUS
 PK - 6TH GRADE
 3815 N. Kedvale, Chicago, IL 60641
 P: (773) 534-3750 F: (773) 534-3757

DISNEY II MAGNET HIGH SCHOOL - LAWDALE CAMPUS
 7TH GRADE - 12TH GRADE
 3900 N. Lawndale Ave. Chicago, IL 60618
 P: (773) 534-5010 F: (773) 534-5199
www.disneyiimagnet.org



**Vanguard
Plumbing and Sewer**

Superior Plumbing Services

773.633.6139

CALL NOW!
 Receive \$25.00 off any service.
 First time customers only

\$25.00 OFF

We specialize in:

- Water Leak Repairs
- Faucets
- Hot Water Heaters
- Tankless Water Heaters
- Garbage Disposals
- Clogged Drains
- Ejector/Sump Pumps
- Battery Backup Systems
- Low Water Pressure Problems
- Water Booster Pumps
- Gas Line Installation & Leak Repairs
- Rehab & Custom Shower Systems
- Sewer Power Rodding
- Sewer camera

vanguardplumbing@gmail.com
www.vanguardplumbingandsewer.com

9th Annual

Wine & Cheese Party



Saturday
November 12
4 – 7 PM

Color Club
4146 N. Elston Ave.
2nd Floor Ballroom

\$55 per ticket

Ticket price includes all wine and charcuterie.

\$65 per ticket at the door

GIPNA

THE GREATER INDEPENDENCE PARK
NEIGHBORHOOD ASSOCIATION

Tickets at gipna.org



Scan Me

All proceeds to benefit the Independence Park Farmers Market and John B. Murphy School.
GIPNA is a 501(c)(3) organization. Ticket price is tax deductible minus the value of goods received (\$30).